

## Summerfield II



Our Summerfield II model offers the convenience of one floor living coupled with the flexibility and value of a two story home.

This design features 5 bedrooms, 3½ baths and 3,374 square feet of living space.

The large kitchen with center island work center is perfect for the chef in the family. The breakfast space is a great place to enjoy a cup of morning coffee or walkout to the covered Porch (optional).

The oversized master suite features a spacious tiled shower, Glamour whirlpool, separate vanities, and a spacious walk-in closet.

You'll love the cozy charm of the clean burning gas fireplace in the large two story great room.

Formal entertaining is a breeze in the elegant dining room. The front den is perfectly suited as a home office or music room.

Additionally, two bedrooms upstairs connect with a Jack-N-Jill bathroom. The other two bedrooms have walk-in closets.

Optional 3 car side entry garage is shown.

Like all 20th Century designs, this home is customizable to meet your specific needs.

Contact 20th Century Construction today at (440) 951-5777 or email [sales@20thcenturyconstruction.com](mailto:sales@20thcenturyconstruction.com) to learn more.

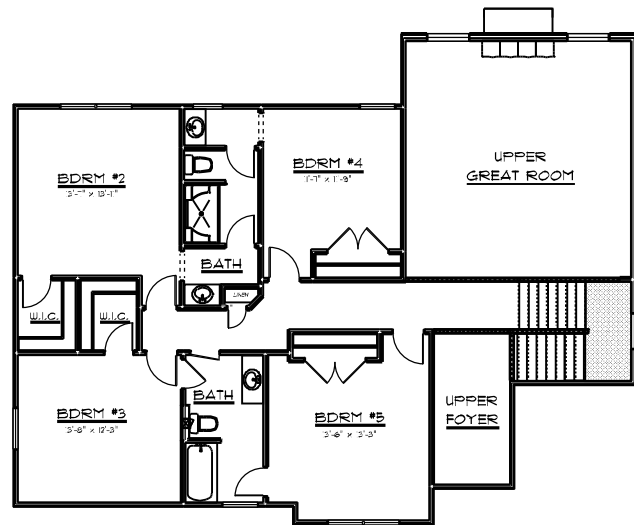


**20th Century Construction Co.**  
2167 Mentor Avenue  
Painesville Twp., Ohio 44077

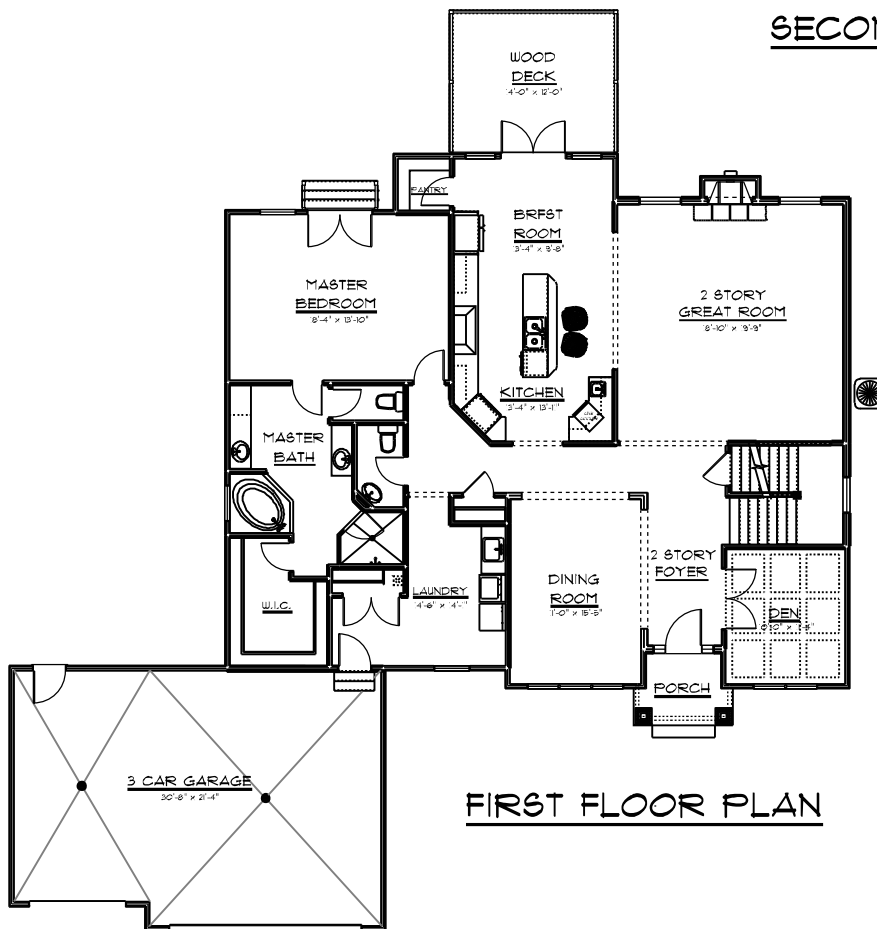
Tel: (440) 951-5777  
Fax: (440) 639-4335

[sales@20thcenturyconstruction.com](mailto:sales@20thcenturyconstruction.com)

# The Summerfield 2 | 20th Century Construction



SECOND FLOOR PLAN



FIRST FLOOR PLAN

**20th Century Construction Co.**  
 2167 Mentor Avenue  
 Painesville Twp., Ohio 44077

Tel: (440) 951-5777  
 Fax: (440) 639-4335

NOTE: This floorplan is the exclusive property of 20th Century Construction Co. and may not be duplicated or modified in any way without the expressed written permission of the company. Some optional features may be shown. Additional floorplan options available. Pricing and specifications may change without notice. See sales representative for details.

sales@20thcenturyconstruction.com  
 www.20thcenturyconstruction.com