

## The Kingston



Our Kingston model is a spacious and flexible plan design to fit your family regardless of size.

This fine home features 4 bedrooms, 2½ baths and 2,972 square feet of living space.

The large kitchen with center island work center is perfect for the chef in the family.

You'll love the cozy charm of the clean burning gas fireplace in the large great room.

The kitchen and adjacent breakfast room are great for informal gatherings. Formal entertaining is a breeze in the elegant dining room.

The rear den is perfectly suited as a home office, playroom or optional 5th bedroom.

The oversized master suite is a true "owners retreat". You'll love the glamour tub, dual vanities and spacious walk-in closet.

Like all 20th Century designs, this home is customizable to meet your specific needs.

Contact 20th Century Construction today at (440) 951-5777 or email [sales@20thcenturyconstruction.com](mailto:sales@20thcenturyconstruction.com) to learn more.

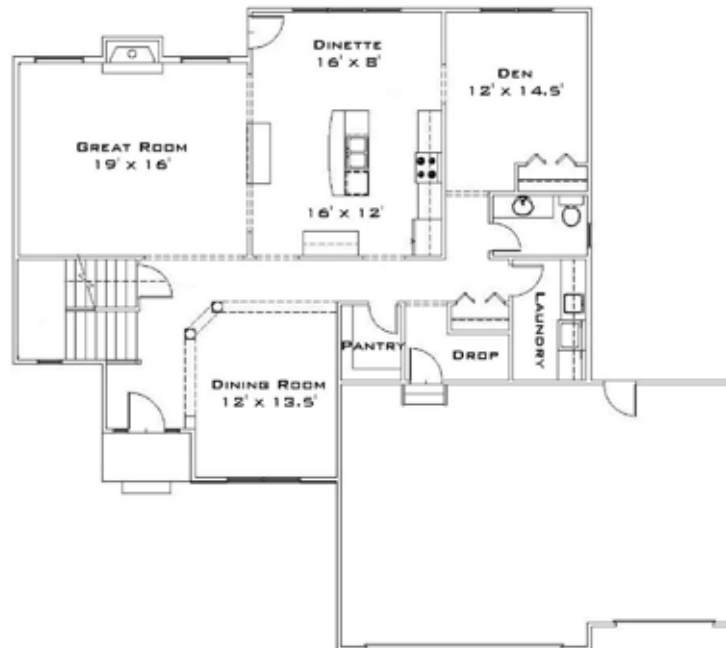
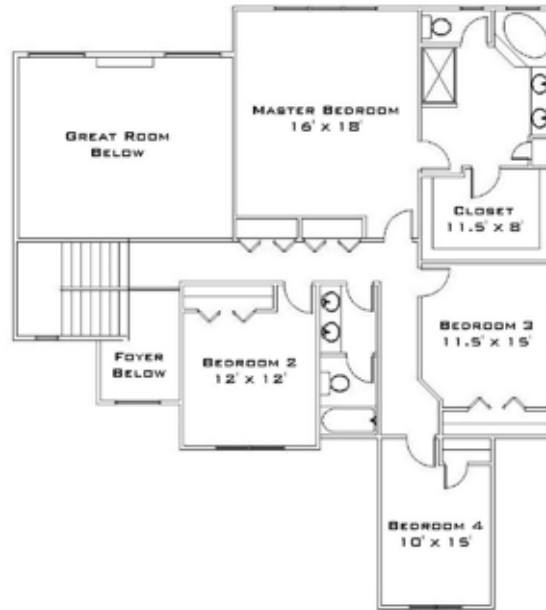


**20th Century Construction Co.**  
2167 Mentor Avenue  
Painesville Twp., Ohio 44077

Tel: (440) 951-5777  
Fax: (440) 639-4335

[sales@20thcenturyconstruction.com](mailto:sales@20thcenturyconstruction.com)

# The Kingston | 20th Century Construction



## 20th Century Construction Co.

2167 Mentor Avenue  
Painesville Twp., Ohio 44077

Tel: (440) 951-5777

Fax: (440) 639-4335

NOTE: This floorplan is the exclusive property of 20th Century Construction Co. and may not be duplicated or modified in any way without the expressed written permission of the company. Some optional features may be shown. Additional floorplan options available. Pricing and specifications may change without notice. See sales representative for details.

[sales@20thcenturyconstruction.com](mailto:sales@20thcenturyconstruction.com)  
[www.20thcenturyconstruction.com](http://www.20thcenturyconstruction.com)